



The Royalton
44 West 44th Street
New York, NY 10036

Inquiry Number: 4992209.3

July 13, 2017

Certified Sanborn® Map Report



6 Armstrong Road, 4th floor
Shelton, CT 06484
Toll Free: 800.352.0050
www.edrnet.com

Certified Sanborn® Map Report

07/13/17

Site Name:

The Royalton
44 West 44th Street
New York, NY 10036
EDR Inquiry # 4992209.3

Client Name:

AEI Consultants
2500 Camino Diablo
Walnut Creek, CA 94597
Contact: Phillip Hoeksema



The Sanborn Library has been searched by EDR and maps covering the target property location as provided by AEI Consultants were identified for the years listed below. The Sanborn Library is the largest, most complete collection of fire insurance maps. The collection includes maps from Sanborn, Bromley, Perris & Browne, Hopkins, Barlow, and others. Only Environmental Data Resources Inc. (EDR) is authorized to grant rights for commercial reproduction of maps by the Sanborn Library LLC, the copyright holder for the collection. Results can be authenticated by visiting www.edrnet.com/sanborn.

The Sanborn Library is continually enhanced with newly identified map archives. This report accesses all maps in the collection as of the day this report was generated.

Certified Sanborn Results:

Certification # 16D9-44C5-A4BE

PO # 136704 136704

Project 374801

Maps Provided:

2005	1993	1968
2004	1992	1950
2003	1991	1929
2002	1988	1910
2001	1987	1899
1996	1985	1890
1995	1983	
1994	1980	



Sanborn® Library search results

Certification #: 16D9-44C5-A4BE

The Sanborn Library includes more than 1.2 million fire insurance maps from Sanborn, Bromley, Perris & Browne, Hopkins, Barlow and others which track historical property usage in approximately 12,000 American cities and towns. Collections searched:

- ☒ Library of Congress
- ☒ University Publications of America
- ☒ EDR Private Collection

The Sanborn Library LLC Since 1866™

Limited Permission To Make Copies

AEI Consultants (the client) is permitted to make up to FIVE photocopies of this Sanborn Map transmittal and each fire insurance map accompanying this report solely for the limited use of its customer. No one other than the client is authorized to make copies. Upon request made directly to an EDR Account Executive, the client may be permitted to make a limited number of additional photocopies. This permission is conditioned upon compliance by the client, its customer and their agents with EDR's copyright policy; a copy of which is available upon request.

Disclaimer - Copyright and Trademark Notice

This Report contains certain information obtained from a variety of public and other sources reasonably available to Environmental Data Resources, Inc. It cannot be concluded from this Report that coverage information for the target and surrounding properties does not exist from other sources. NO WARRANTY EXPRESSED OR IMPLIED, IS MADE WHATSOEVER IN CONNECTION WITH THIS REPORT. ENVIRONMENTAL DATA RESOURCES, INC. SPECIFICALLY DISCLAIMS THE MAKING OF ANY SUCH WARRANTIES, INCLUDING WITHOUT LIMITATION, MERCHANTABILITY OR FITNESS FOR A PARTICULAR USE OR PURPOSE. ALL RISK IS ASSUMED BY THE USER. IN NO EVENT SHALL ENVIRONMENTAL DATA RESOURCES, INC. BE LIABLE TO ANYONE, WHETHER ARISING OUT OF ERRORS OR OMISSIONS, NEGLIGENCE, ACCIDENT OR ANY OTHER CAUSE, FOR ANY LOSS OF DAMAGE, INCLUDING, WITHOUT LIMITATION, SPECIAL, INCIDENTAL, CONSEQUENTIAL, OR EXEMPLARY DAMAGES. ANY LIABILITY ON THE PART OF ENVIRONMENTAL DATA RESOURCES, INC. IS STRICTLY LIMITED TO A REFUND OF THE AMOUNT PAID FOR THIS REPORT. Purchaser accepts this Report "AS IS". Any analyses, estimates, ratings, environmental risk levels or risk codes provided in this Report are provided for illustrative purposes only, and are not intended to provide, nor should they be interpreted as providing any facts regarding, or prediction or forecast of, any environmental risk for any property. Only a Phase I Environmental Site Assessment performed by an environmental professional can provide information regarding the environmental risk for any property. Additionally, the information provided in this Report is not to be construed as legal advice.

Copyright 2017 by Environmental Data Resources, Inc. All rights reserved. Reproduction in any media or format, in whole or in part, of any report or map of Environmental Data Resources, Inc., or its affiliates, is prohibited without prior written permission.

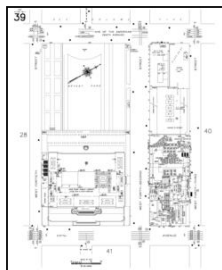
EDR and its logos (including Sanborn and Sanborn Map) are trademarks of Environmental Data Resources, Inc. or its affiliates. All other trademarks used herein are the property of their respective owners.

Sanborn Sheet Key

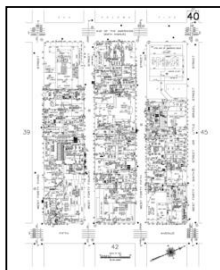
This Certified Sanborn Map Report is based upon the following Sanborn Fire Insurance map sheets.



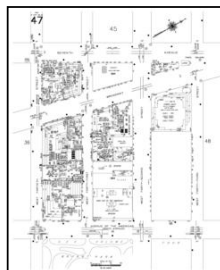
2005 Source Sheets



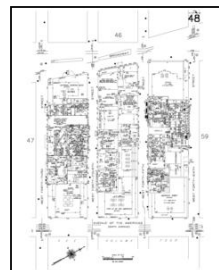
Volume 4, Sheet 39
2005-2006



Volume 4, Sheet 40
2005-2006

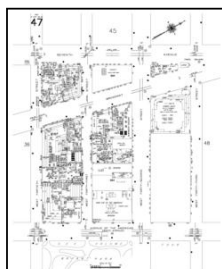


Volume 5N, Sheet 47
2005-2006

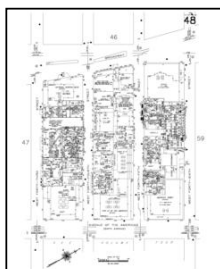


Volume 5N, Sheet 48
2005-2006

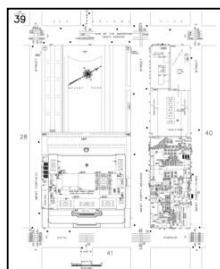
2004 Source Sheets



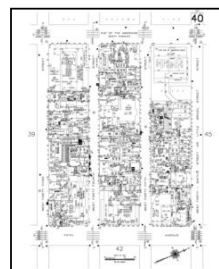
Volume 5N, Sheet 47
2004



Volume 5N, Sheet 48
2004

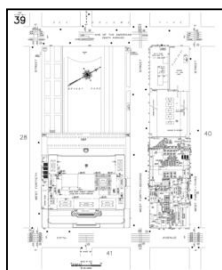


Volume 4, Sheet 39
2004

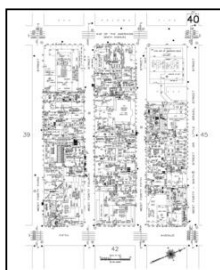


Volume 4, Sheet 40
2004

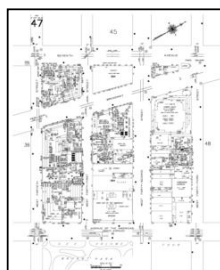
2003 Source Sheets



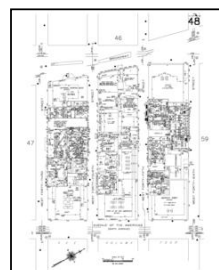
Volume 4, Sheet 39
2003



Volume 4, Sheet 40
2003

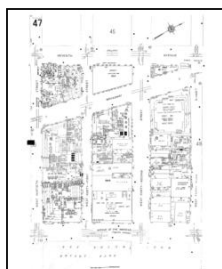


Volume 5N, Sheet 47
2003

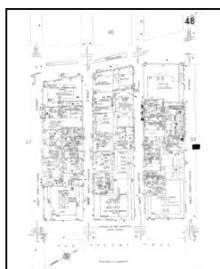


Volume 5N, Sheet 48
2003

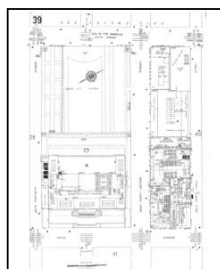
2002 Source Sheets



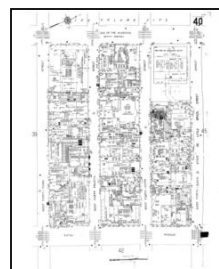
Volume 5N, Sheet 47
2002



Volume 5N, Sheet 48
2002



Volume 4, Sheet 39
2002



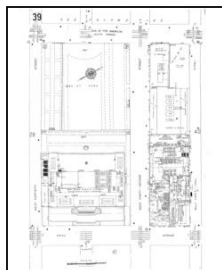
Volume 4, Sheet 40
2002

Sanborn Sheet Key

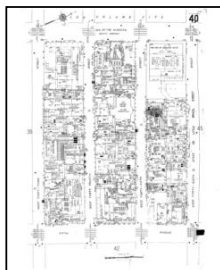
This Certified Sanborn Map Report is based upon the following Sanborn Fire Insurance map sheets.



2001 Source Sheets



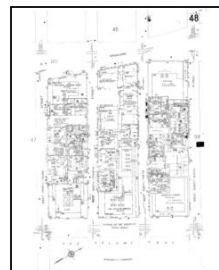
Volume 4, Sheet 39
2001



Volume 4, Sheet 40
2001

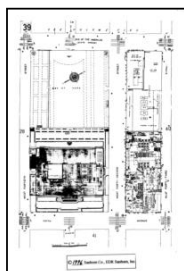


Volume 5N, Sheet 47
2001

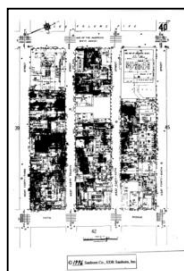


Volume 5N, Sheet 48
2001

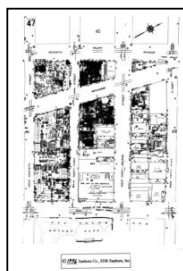
1996 Source Sheets



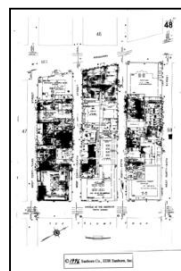
Volume 4, Sheet 39
1996



Volume 4, Sheet 40
1996



Volume 5N, Sheet 47
1996

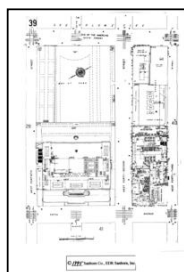


Volume 5N, Sheet 48
1996

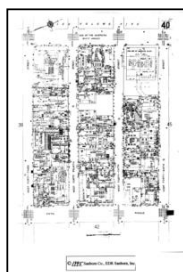
1995 Source Sheets



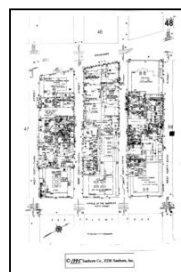
Volume 5N, Sheet 47
1995



Volume 4, Sheet 39
1995



Volume 4, Sheet 40
1995

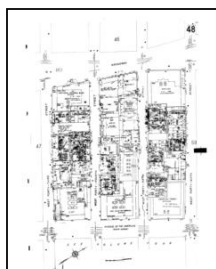


Volume 5N, Sheet 48
1995

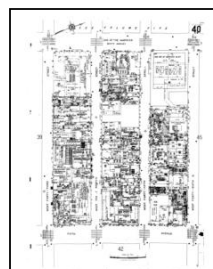
1994 Source Sheets



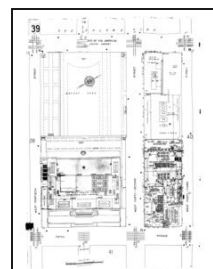
Volume 5N, Sheet 47
1994



Volume 5N, Sheet 48
1994



Volume 4, Sheet 40
1994



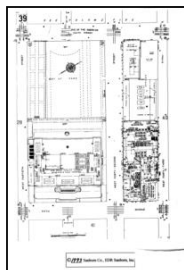
Volume 4, Sheet 39
1994

Sanborn Sheet Key

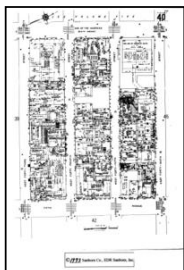
This Certified Sanborn Map Report is based upon the following Sanborn Fire Insurance map sheets.



1993 Source Sheets



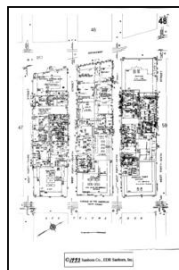
Volume 4, Sheet 39
1993



Volume 4, Sheet 40
1993

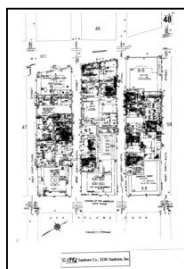


Volume 5N, Sheet 47
1993

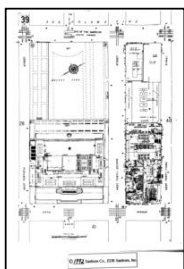


Volume 5N, Sheet 48
1993

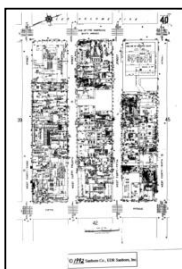
1992 Source Sheets



Volume 5N, Sheet 48
1992

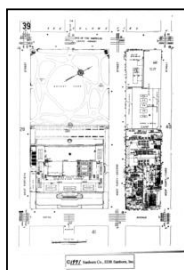


Volume 4, Sheet 39
1992

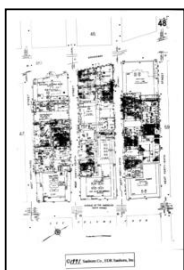


Volume 4, Sheet 40
1992

1991 Source Sheets



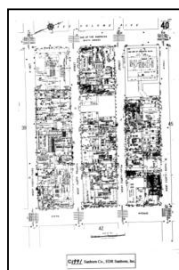
Volume 4, Sheet 39
1991



Volume 5N, Sheet 48
1991

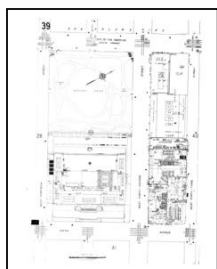


Volume 5N, Sheet 47
1991

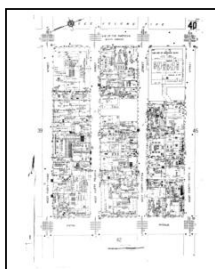


Volume 4, Sheet 40
1991

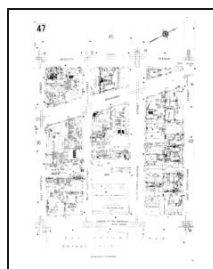
1988 Source Sheets



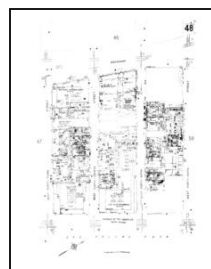
Volume 4, Sheet 39
1988



Volume 4, Sheet 40
1988



Volume 5N, Sheet 47
1988



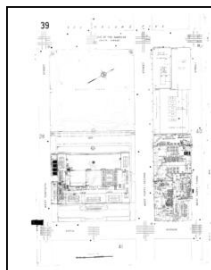
Volume 5N, Sheet 48
1988

Sanborn Sheet Key

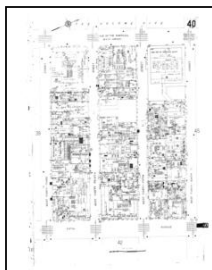
This Certified Sanborn Map Report is based upon the following Sanborn Fire Insurance map sheets.



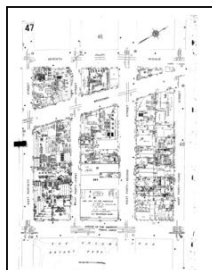
1987 Source Sheets



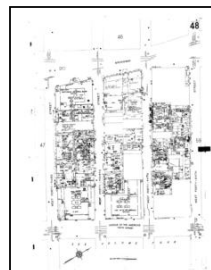
Volume 4, Sheet 39
1987



Volume 4, Sheet 40
1987

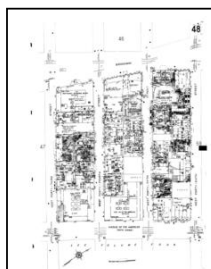


Volume 5N, Sheet 47
1987

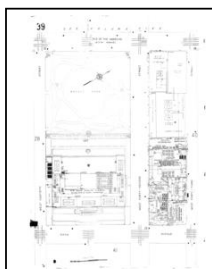


Volume 5N, Sheet 48
1987

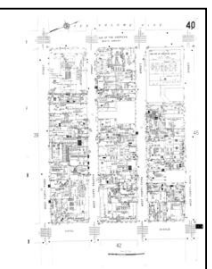
1985 Source Sheets



Volume 5N, Sheet 48
1985



Volume 4, Sheet 39
1985

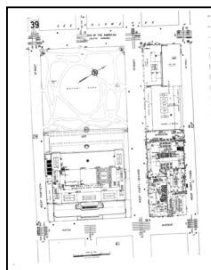


Volume 4, Sheet 40
1985

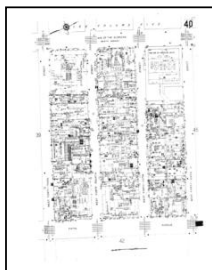


Volume 5N, Sheet 47
1985

1983 Source Sheets

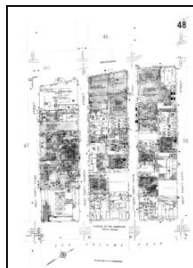


Volume 4, Sheet 39
1983

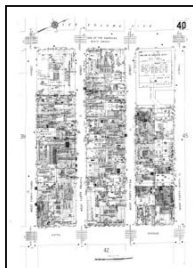


Volume 4, Sheet 40
1983

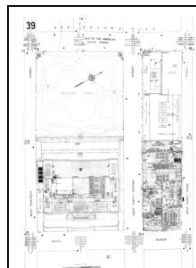
1980 Source Sheets



Volume 5N, Sheet 48
1980



Volume 4, Sheet 40
1980



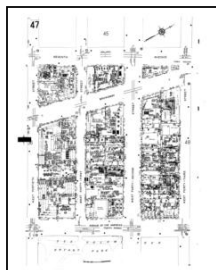
Volume 4, Sheet 39
1980

Sanborn Sheet Key

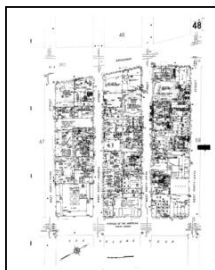
This Certified Sanborn Map Report is based upon the following Sanborn Fire Insurance map sheets.



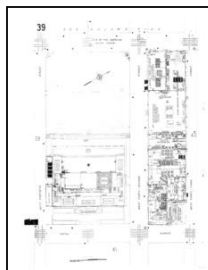
1968 Source Sheets



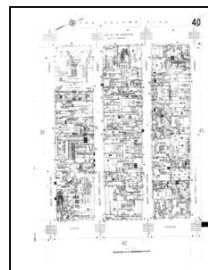
Volume 5N, Sheet 47
1968



Volume 5N, Sheet 48
1968

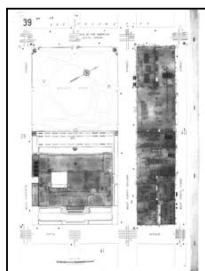


Volume 4, Sheet 39
1968

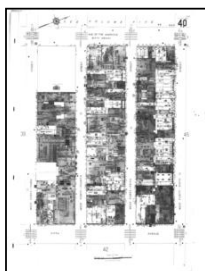


Volume 4, Sheet 40
1968

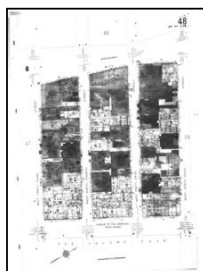
1950 Source Sheets



Volume 4, Sheet 39
1950

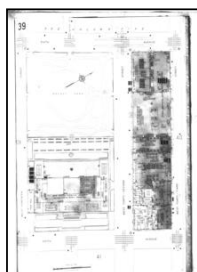


Volume 4, Sheet 40
1950

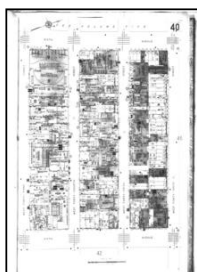


Volume 5N, Sheet 48
1950

1929 Source Sheets

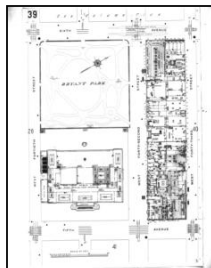


Volume 4, Sheet 39
1929



Volume 4, Sheet 40
1929

1910 Source Sheets



Volume 4, Sheet 39
1910



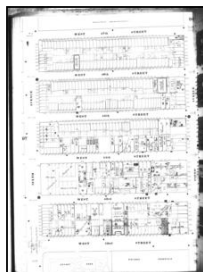
Volume 4, Sheet 40
1910

Sanborn Sheet Key

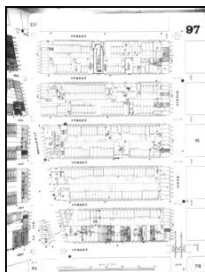
This Certified Sanborn Map Report is based upon the following Sanborn Fire Insurance map sheets.



1899 Source Sheets

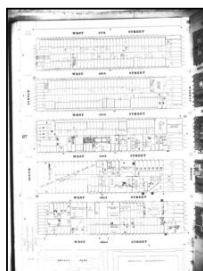


Volume 4, Sheet 81
1899



Volume 5N, Sheet 97
1899

1890 Source Sheets



Volume 4, Sheet 81
1890



Volume 5N, Sheet 97
1890



The certified Sanborn Library search results in this report can be authenticated by visiting www.edrnet.com/sanborn and entering the certification number. Only Environmental Data Resources Inc. (EDR) is authorized to grant rights for commercial reproduction of maps by The Sanborn Library LLC, the copyright holder for the collection.

Certification # 16D9-44C5-A4BE



SANBORN MAP - 2005

Project Number:

AEI
Consultants



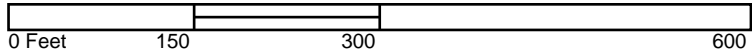
The certified Sanborn Library search results in this report can be authenticated by visiting www.edrnet.com/sanborn and entering the certification number. Only Environmental Data Resources Inc. (EDR) is authorized to grant rights for commercial reproduction of maps by The Sanborn Library LLC, the copyright holder for the collection.

Certification # 16D9-44C5-A4BE

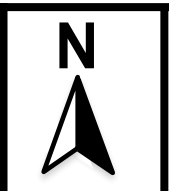
Legend:

Approximate Property Boundary: —————

Volume 4, Sheet 40
Volume 4, Sheet 39
Volume 5N, Sheet 48
Volume 5N, Sheet 47



Site Name:
Address:
City, ST, ZIP:
Client: AEI Consultants
EDR Inquiry: 4992209.3
Order Date: 07/13/2017
Certification # 16D9-44C5-A4BE
Copyright 2004



SANBORN MAP - 2004

Project Number:





The certified Sanborn Library search results in this report can be authenticated by visiting www.edrnet.com/sanborn and entering the certification number. Only Environmental Data Resources Inc. (EDR) is authorized to grant rights for commercial reproduction of maps by The Sanborn Library LLC, the copyright holder for the collection.

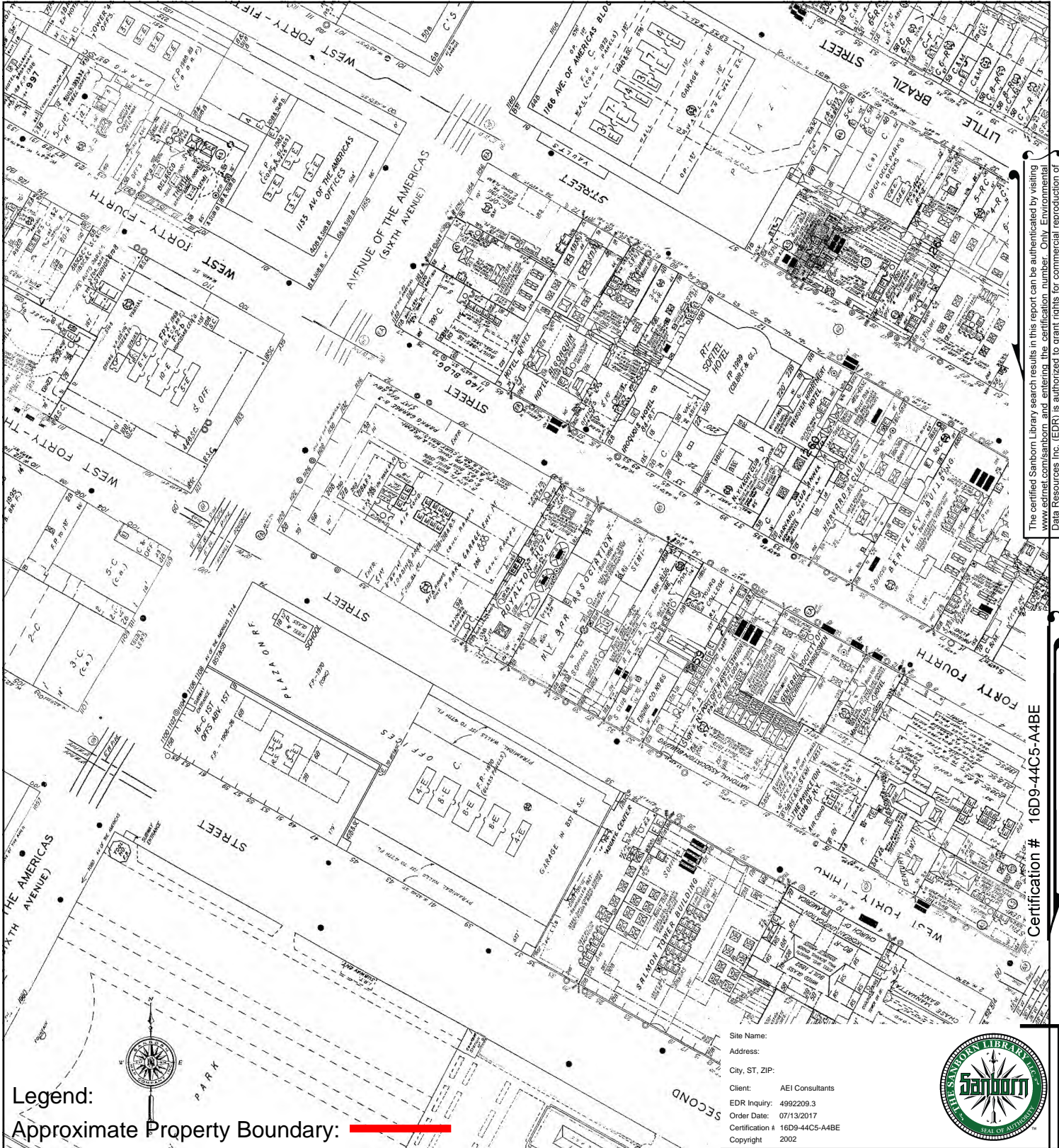
Certification # 16D9-44C5-A4BE



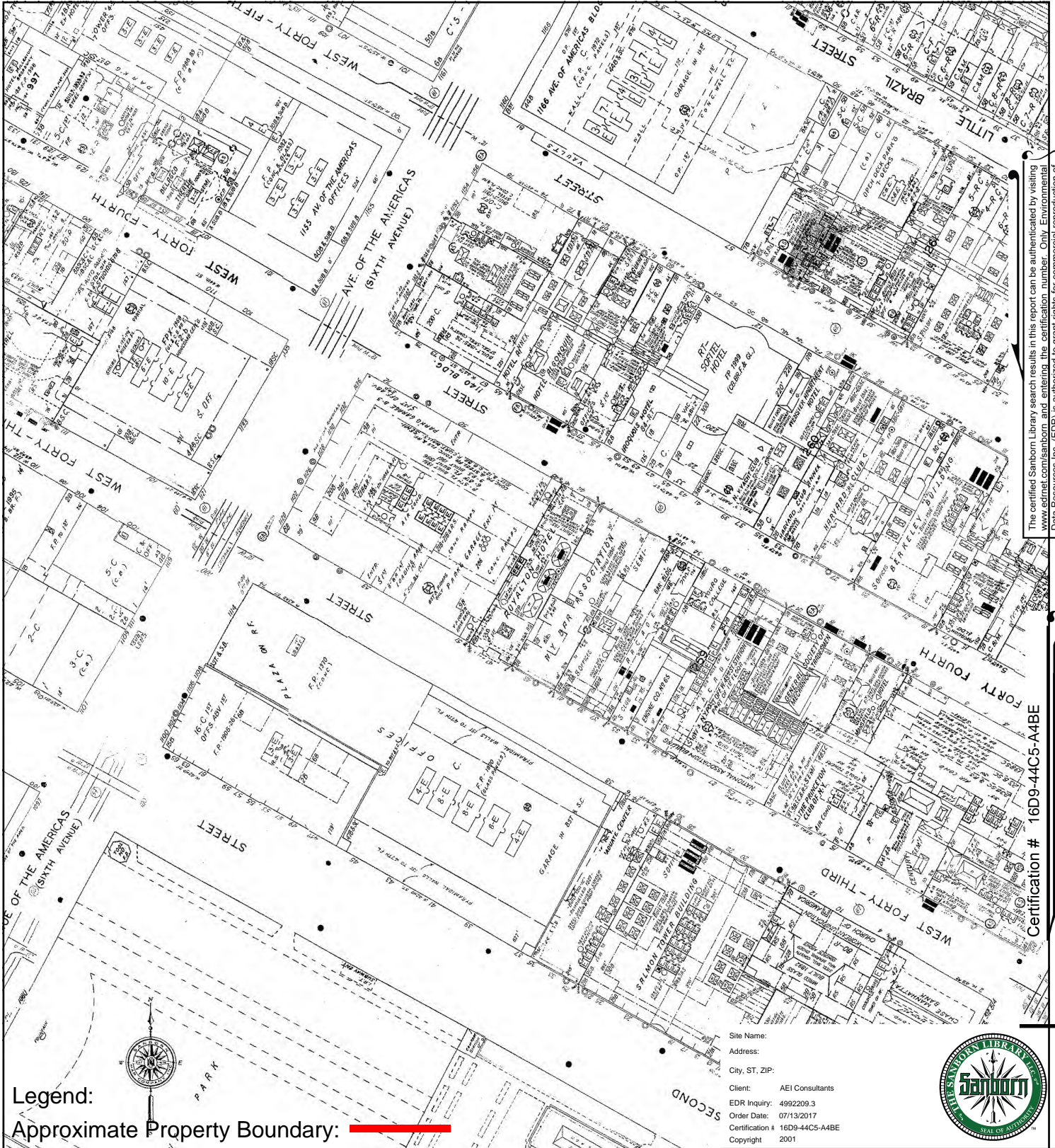
SANBORN MAP - 2003

Project Number:

AEI
Consultants



The certified Sanborn Library search results in this report can be authenticated by visiting www.edrnet.com/sanborn and entering the certification number. Only Environmental Data Resources Inc. (EDR) is authorized to grant rights for commercial reproduction of maps by The Sanborn Library LLC, the copyright holder for the collection.



The certified Sanborn Library search results in this report can be authenticated by visiting www.edrnet.com/sanborn and entering the certification number. Only Environmental Data Resources Inc. (EDR) is authorized to grant rights for commercial reproduction of maps by The Sanborn Library LLC, the copyright holder for the collection.

Certification # 16D9-44C5-A4BE

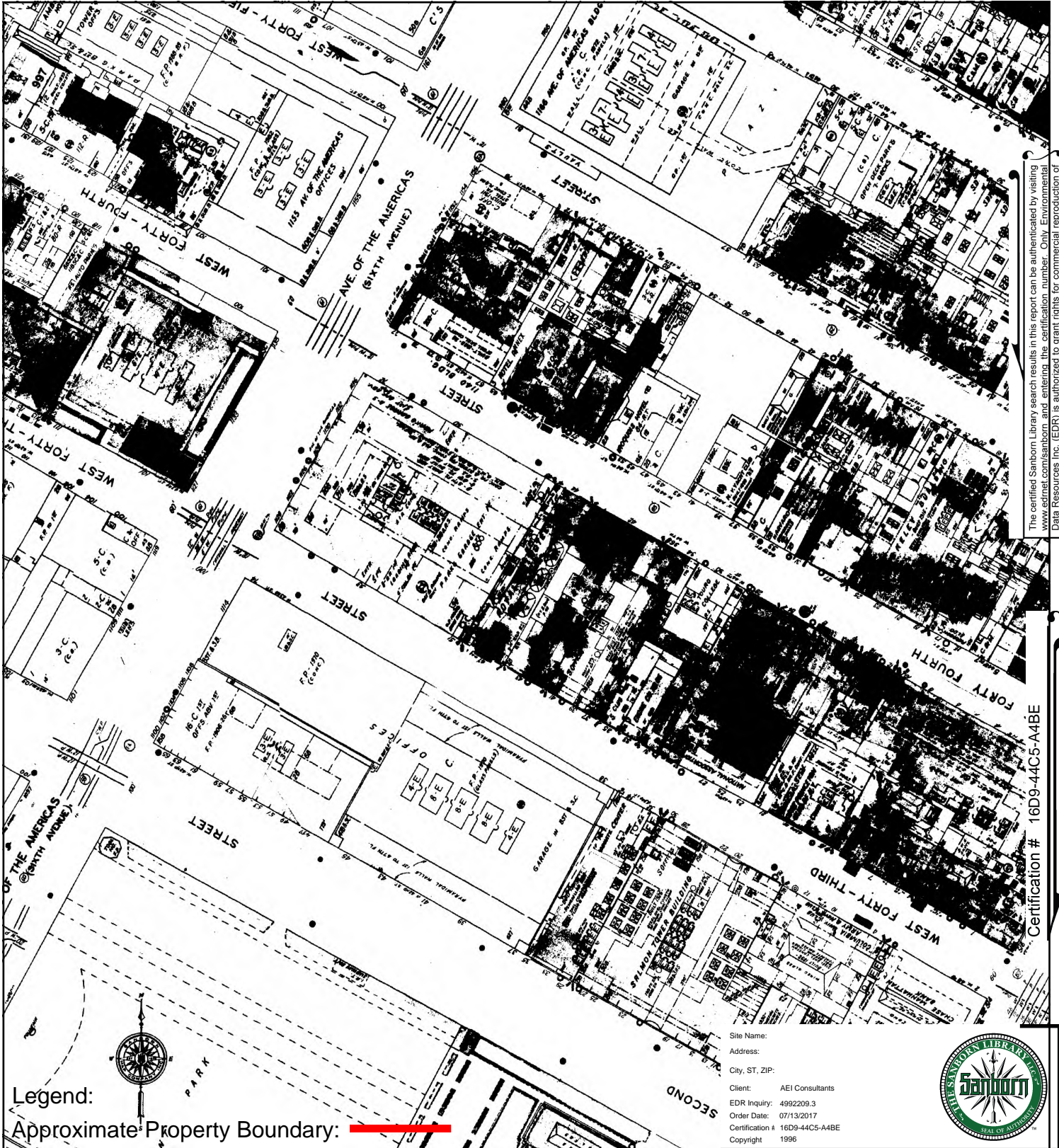
Legend:
Approximate Property Boundary: —

Volume 5N, Sheet 48
Volume 5N, Sheet 47
Volume 4, Sheet 40
Volume 4, Sheet 39

0 Feet 150 300 600

SANBORN MAP - 2001

Project Number:



The certified Sanborn Library search results in this report can be authenticated by visiting www.edrnet.com/sanborn and entering the certification number. Only Environmental Data Resources Inc. (EDR) is authorized to grant rights for commercial reproduction of maps by The Sanborn Library LLC, the copyright holder for the collection.

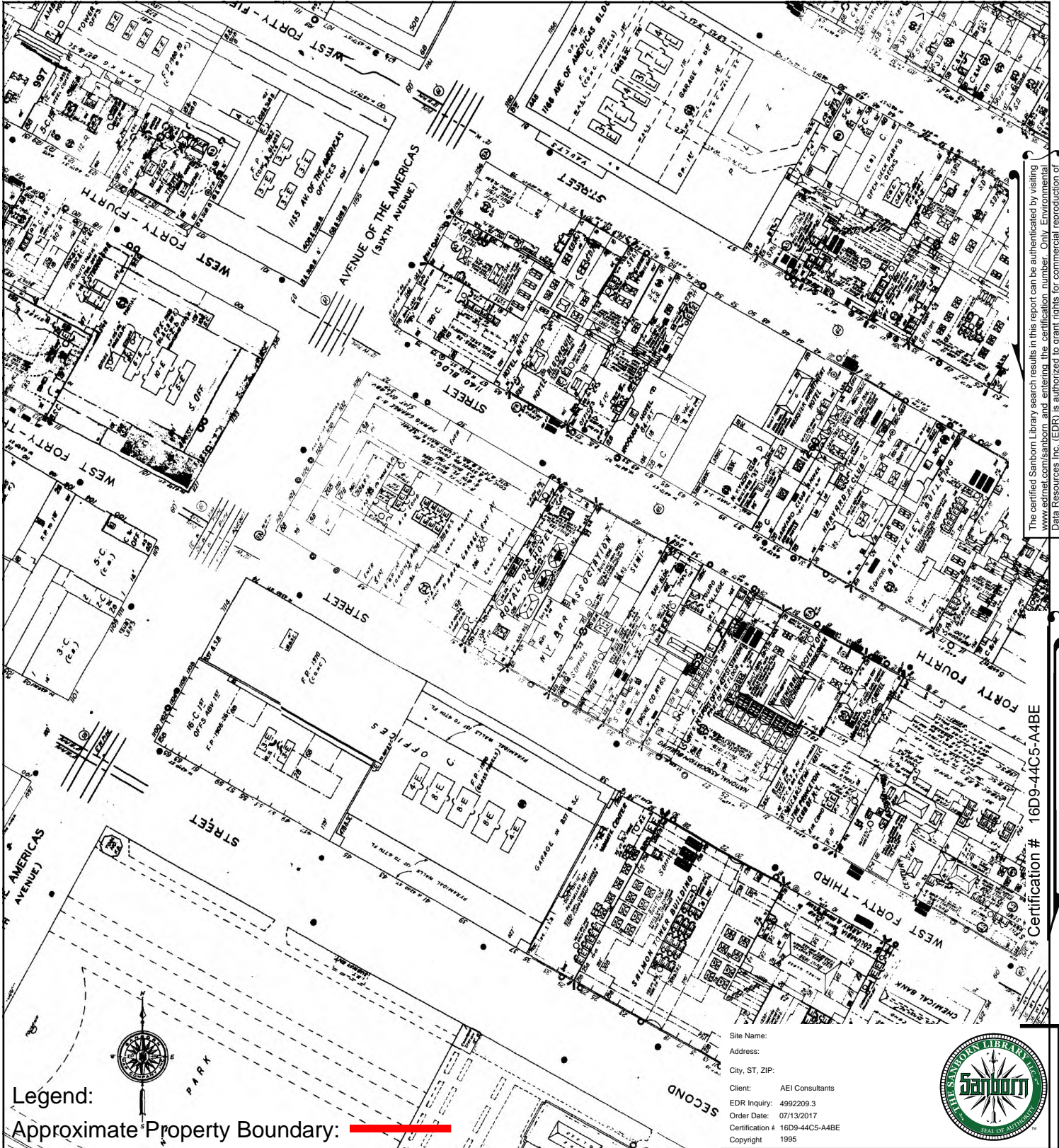
Certification # 16D9-44C5-A4BE



SANBORN MAP - 1996

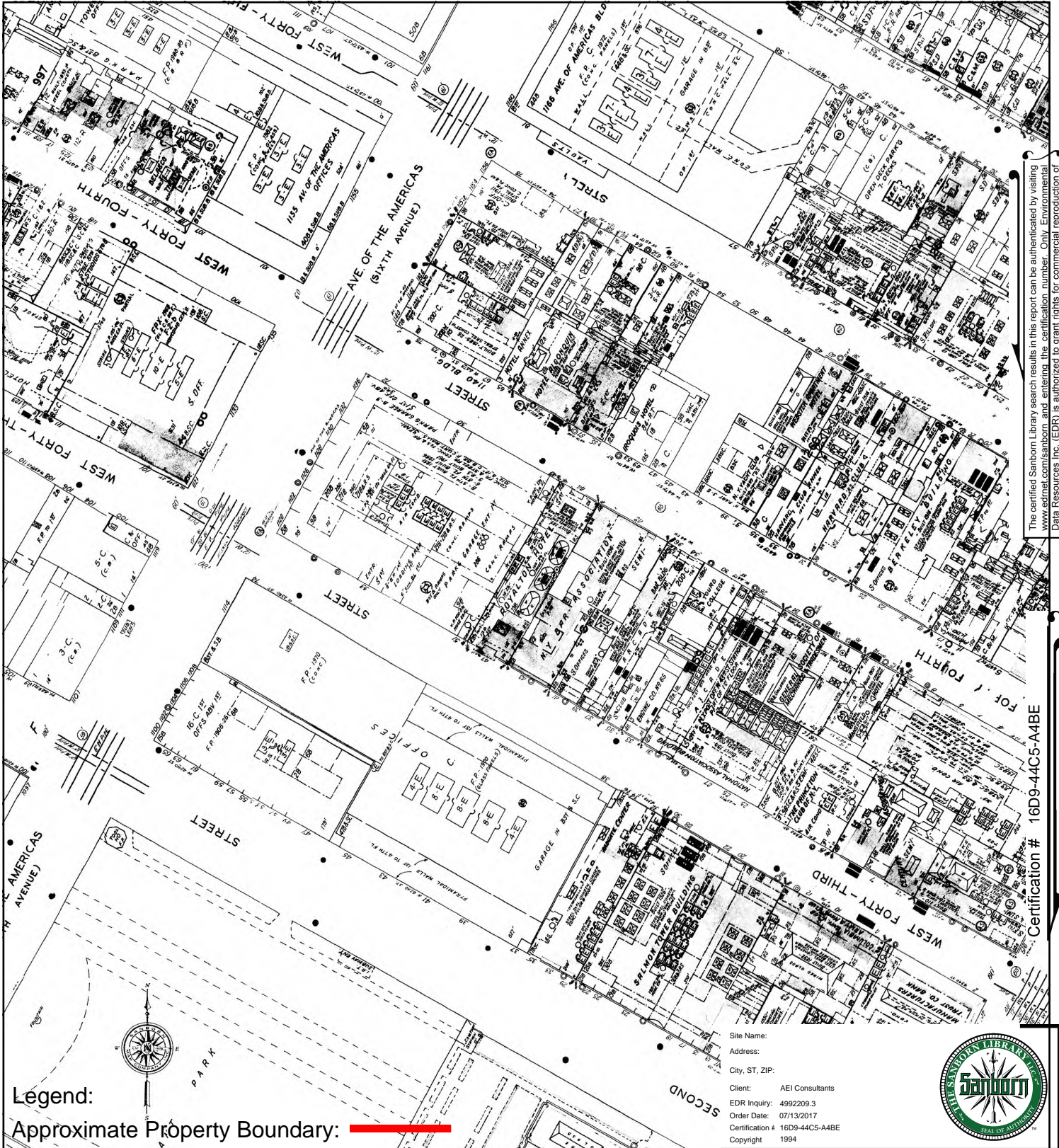
Project Number:

AEI
Consultants



The certified Sanborn Library search results in this report can be authenticated by visiting www.edrnet.com/sanborn and entering the certification number. Only Environmental Data Resources Inc. (EDR) is authorized to grant rights for commercial reproduction of maps by The Sanborn Library LLC, the copyright holder for the collection.

Certification # 16D9-44C5-A4BE



The certified Sanborn Library search results in this report can be authenticated by visiting www.edrnet.com/sanborn and entering the certification number. Only Environmental Data Resources Inc. (EDR) is authorized to grant rights for commercial reproduction of maps by The Sanborn Library LLC, the copyright holder for the collection.

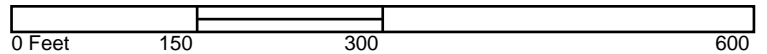
Certification # 16D9-44C5-A4BE

Legend:

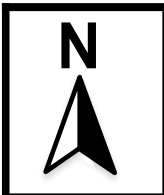
Approximate Property Boundary: —



Volume 4, Sheet 39
Volume 4, Sheet 40
Volume 5N, Sheet 48
Volume 5N, Sheet 47



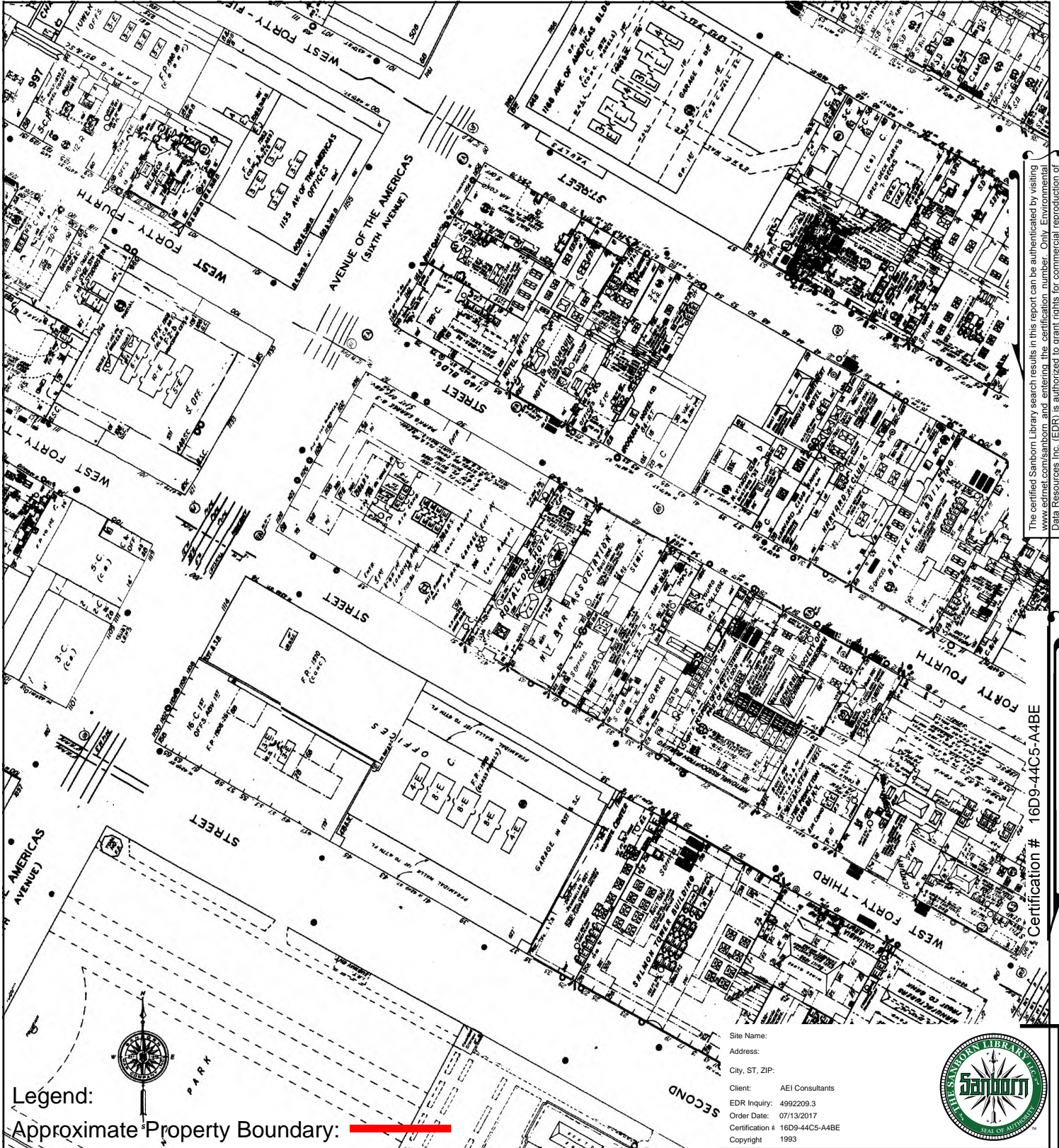
Site Name:
Address:
City, ST, ZIP:
Client: AEI Consultants
EDR Inquiry: 4992209.3
Order Date: 07/13/2017
Certification # 16D9-44C5-A4BE
Copyright 1994



SANBORN MAP - 1994

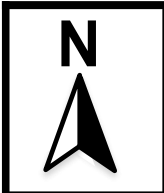
Project Number:

AEI
Consultants



The certified Sanborn Library search results in this report can be authenticated by visiting www.edrnet.com/sanborn and entering the certification number. Only Environmental Data Resources Inc. (EDR) is authorized to grant rights for commercial reproduction of maps by The Sanborn Library LLC, the copyright holder for the collection.

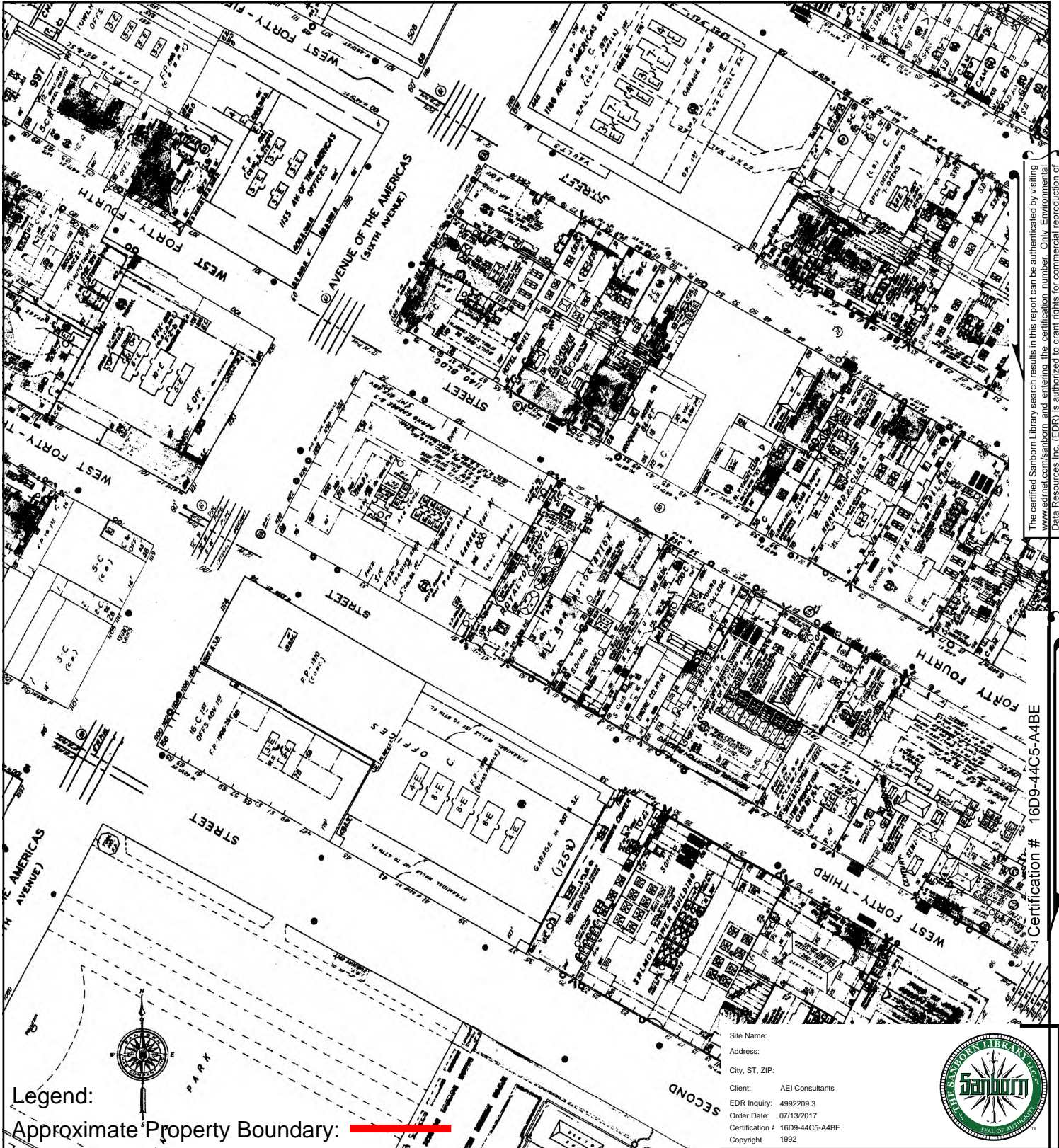
Certification # 16D9-44C5-A4BE



SANBORN MAP - 1993

Project Number:

AEI
Consultants



The certified Sanborn Library search results in this report can be authenticated by visiting www.edrnet.com/sanborn and entering the certification number. Only Environmental Data Resources Inc. (EDR) is authorized to grant rights for commercial reproduction of maps by The Sanborn Library LLC, the copyright holder for the collection.

Certification # 16D9-44C5-A4BE



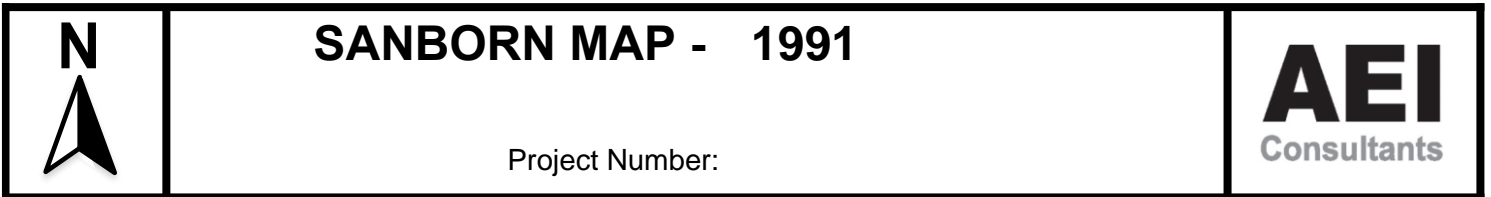
Site Name:
Address:
City, ST, ZIP:
Client: AEI Consultants
EDR Inquiry: 4992209.3
Order Date: 07/13/2017
Certification # 16D9-44C5-A4BE
Copyright 1992

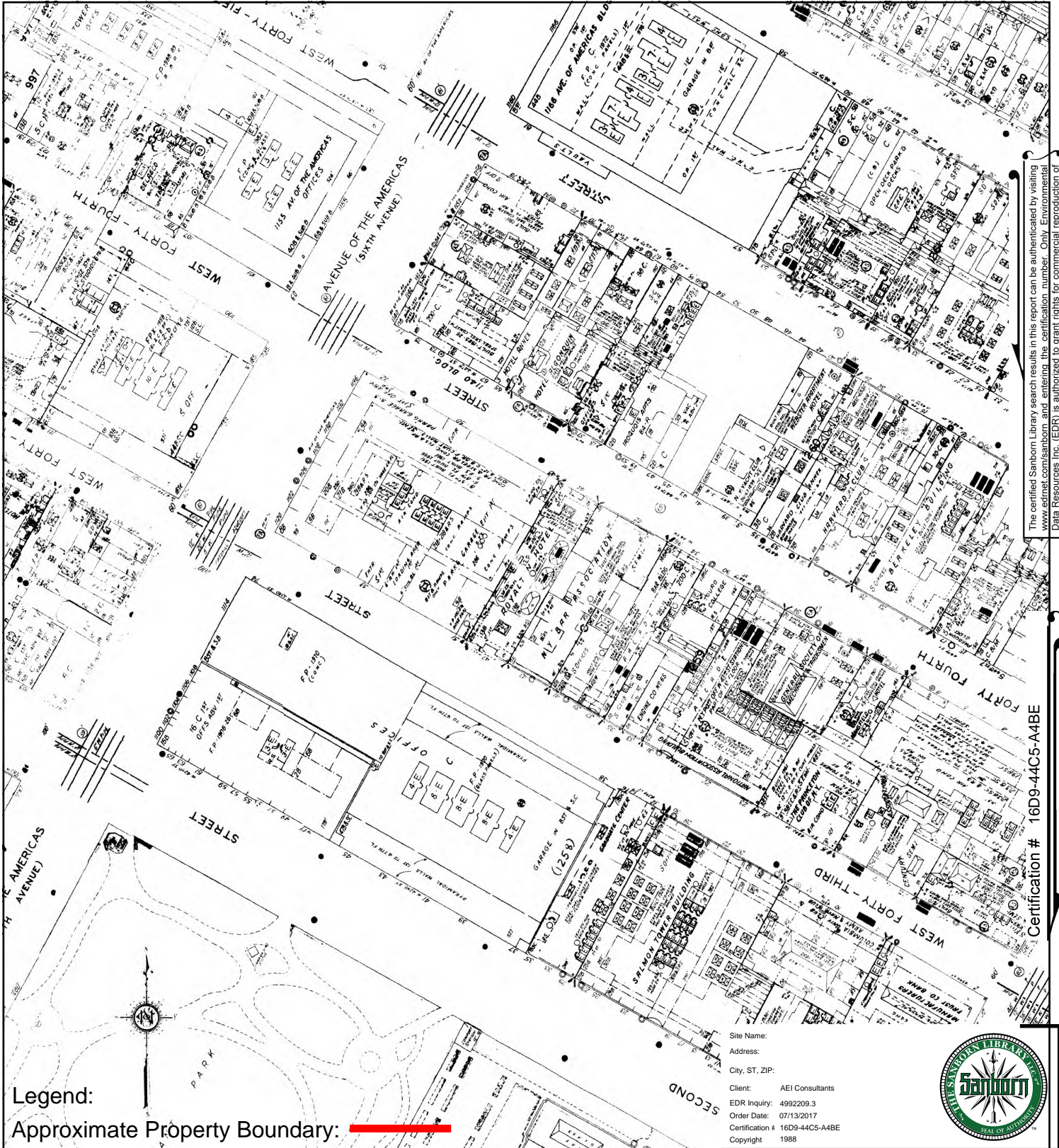
Legend:
Approximate Property Boundary: —
Volume 4, Sheet 40
Volume 4, Sheet 39
Volume 5N, Sheet 48

0 Feet 150 300 600

SANBORN MAP - 1992

Project Number:





Legend:
Approximate Property Boundary: ———

Volume 5N, Sheet 48
Volume 5N, Sheet 47
Volume 4, Sheet 40
Volume 4, Sheet 39

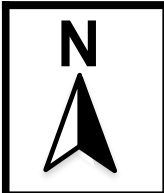
0 Feet 150 300 600

Site Name:
Address:
City, ST, ZIP:
Client: AEI Consultants
EDR Inquiry: 4992209.3
Order Date: 07/13/2017
Certification # 16D9-44C5-A4BE
Copyright 1988



The certified Sanborn Library search results in this report can be authenticated by visiting www.edrnet.com/sanborn and entering the certification number. Only Environmental Data Resources Inc. (EDR) is authorized to grant rights for commercial reproduction of maps by The Sanborn Library LLC, the copyright holder for the collection.

Certification # 16D9-44C5-A4BE



SANBORN MAP - 1988

Project Number:

