



3636 Lyell Road

3636 Lyell Road

Rochester, NY 14606

Inquiry Number: 4769949.5

November 02, 2016

## The EDR Aerial Photo Decade Package



6 Armstrong Road, 4th floor  
Shelton, CT 06484  
Toll Free: 800.352.0050  
[www.edrnet.com](http://www.edrnet.com)

## EDR Aerial Photo Decade Package

11/02/16

**Site Name:**

3636 Lyell Road  
3636 Lyell Road  
Rochester, NY 14606  
EDR Inquiry # 4769949.5

**Client Name:**

Property Solutions, Inc.  
323 New Albany Road  
Moorestown, NJ 08057  
Contact: Greg Hillebrand



Environmental Data Resources, Inc. (EDR) Aerial Photo Decade Package is a screening tool designed to assist environmental professionals in evaluating potential liability on a target property resulting from past activities. EDR's professional researchers provide digitally reproduced historical aerial photographs, and when available, provide one photo per decade.

**Search Results:**

<b><i>Year</i></b>	<b><i>Scale</i></b>	<b><i>Details</i></b>	<b><i>Source</i></b>
2011	1"=500'	Flight Year: 2011	USDA/NAIP
2009	1"=500'	Flight Year: 2009	USDA/NAIP
2008	1"=500'	Flight Year: 2008	USDA/NAIP
2006	1"=500'	Flight Year: 2006	USDA/NAIP
1994	1"=500'	Acquisition Date: April 22, 1994	USGS/DOQQ
1985	1"=500'	Flight Date: April 29, 1985	USGS
1979	1"=500'	Flight Date: June 26, 1979	USDA
1971	1"=500'	Flight Date: May 07, 1971	USGS
1969	1"=500'	Flight Date: June 09, 1969	USGS
1966	1"=500'	Flight Date: July 01, 1966	USDA
1958	1"=500'	Flight Date: July 20, 1958	USDA
1951	1"=500'	Flight Date: September 08, 1951	USGS
1938	1"=500'	Flight Date: July 02, 1938	USDA

**When delivered electronically by EDR, the aerial photo images included with this report are for ONE TIME USE ONLY. Further reproduction of these aerial photo images is prohibited without permission from EDR. For more information contact your EDR Account Executive.**

**Disclaimer - Copyright and Trademark Notice**

This Report contains certain information obtained from a variety of public and other sources reasonably available to Environmental Data Resources, Inc. It cannot be concluded from this Report that coverage information for the target and surrounding properties does not exist from other sources. NO WARRANTY EXPRESSED OR IMPLIED, IS MADE WHATSOEVER IN CONNECTION WITH THIS REPORT. ENVIRONMENTAL DATA RESOURCES, INC. SPECIFICALLY DISCLAIMS THE MAKING OF ANY SUCH WARRANTIES, INCLUDING WITHOUT LIMITATION, MERCHANTABILITY OR FITNESS FOR A PARTICULAR USE OR PURPOSE. ALL RISK IS ASSUMED BY THE USER. IN NO EVENT SHALL ENVIRONMENTAL DATA RESOURCES, INC. BE LIABLE TO ANYONE, WHETHER ARISING OUT OF ERRORS OR OMISSIONS, NEGLIGENCE, ACCIDENT OR ANY OTHER CAUSE, FOR ANY LOSS OF DAMAGE, INCLUDING, WITHOUT LIMITATION, SPECIAL, INCIDENTAL, CONSEQUENTIAL, OR EXEMPLARY DAMAGES. ANY LIABILITY ON THE PART OF ENVIRONMENTAL DATA RESOURCES, INC. IS STRICTLY LIMITED TO A REFUND OF THE AMOUNT PAID FOR THIS REPORT. Purchaser accepts this Report "AS IS". Any analyses, estimates, ratings, environmental risk levels or risk codes provided in this Report are provided for illustrative purposes only, and are not intended to provide, nor should they be interpreted as providing any facts regarding, or prediction or forecast of, any environmental risk for any property. Only a Phase I Environmental Site Assessment performed by an environmental professional can provide information regarding the environmental risk for any property. Additionally, the information provided in this Report is not to be construed as legal advice.

Copyright 2016 by Environmental Data Resources, Inc. All rights reserved. Reproduction in any media or format, in whole or in part, of any report or map of Environmental Data Resources, Inc., or its affiliates, is prohibited without prior written permission.

EDR and its logos (including Sanborn and Sanborn Map) are trademarks of Environmental Data Resources, Inc. or its affiliates. All other trademarks used herein are the property of their respective owners.



INQUIRY #: 4769949.5

YEAR: 2011

— = 500'





INQUIRY #: 4769949.5

YEAR: 2009

— = 500'





INQUIRY #: 4769949.5

YEAR: 2008

= 500'





INQUIRY #: 4769949.5

YEAR: 2006

— = 500'





INQUIRY #: 4769949.5

YEAR: 1994

— = 500'



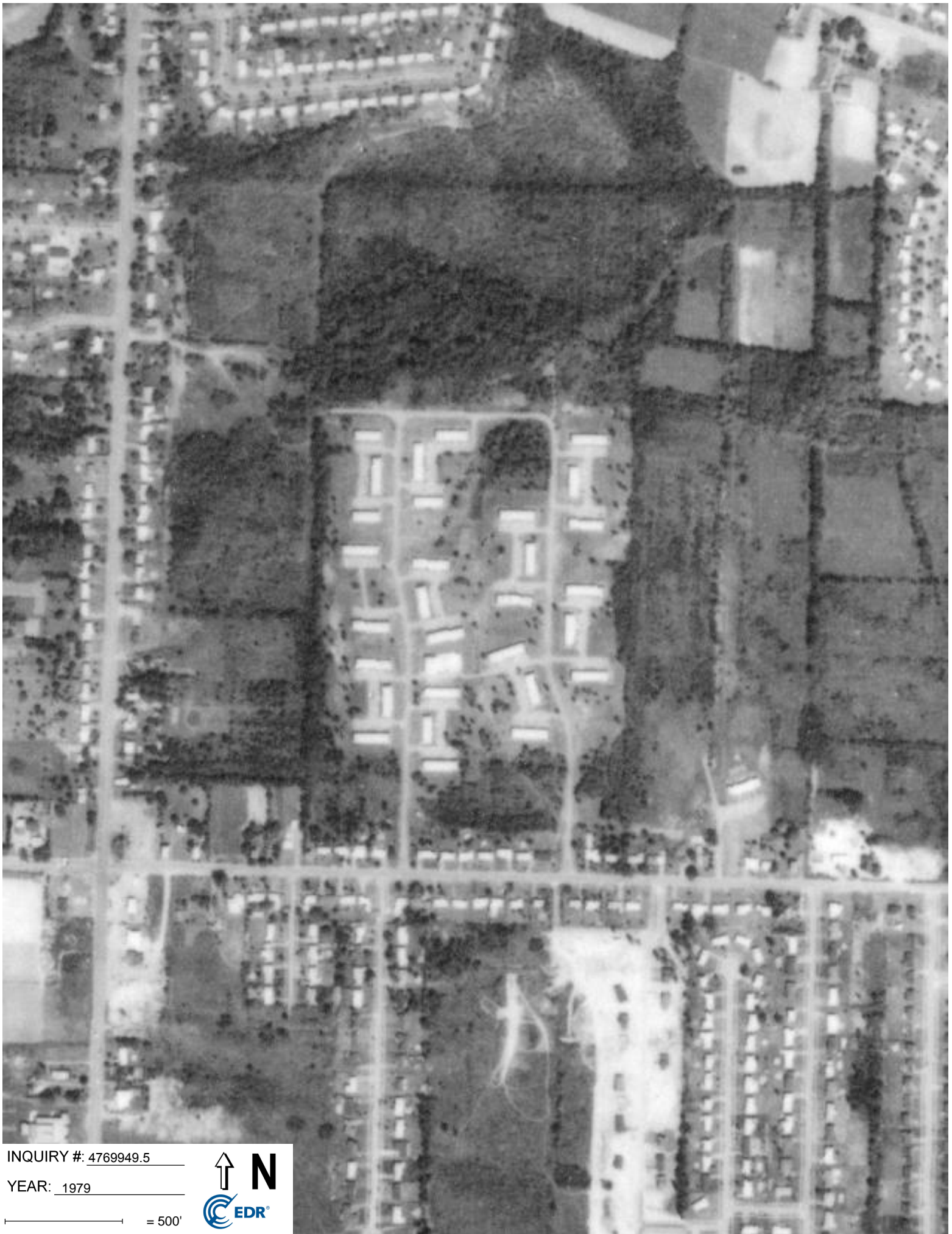


INQUIRY #: 4769949.5

YEAR: 1985

— = 500'



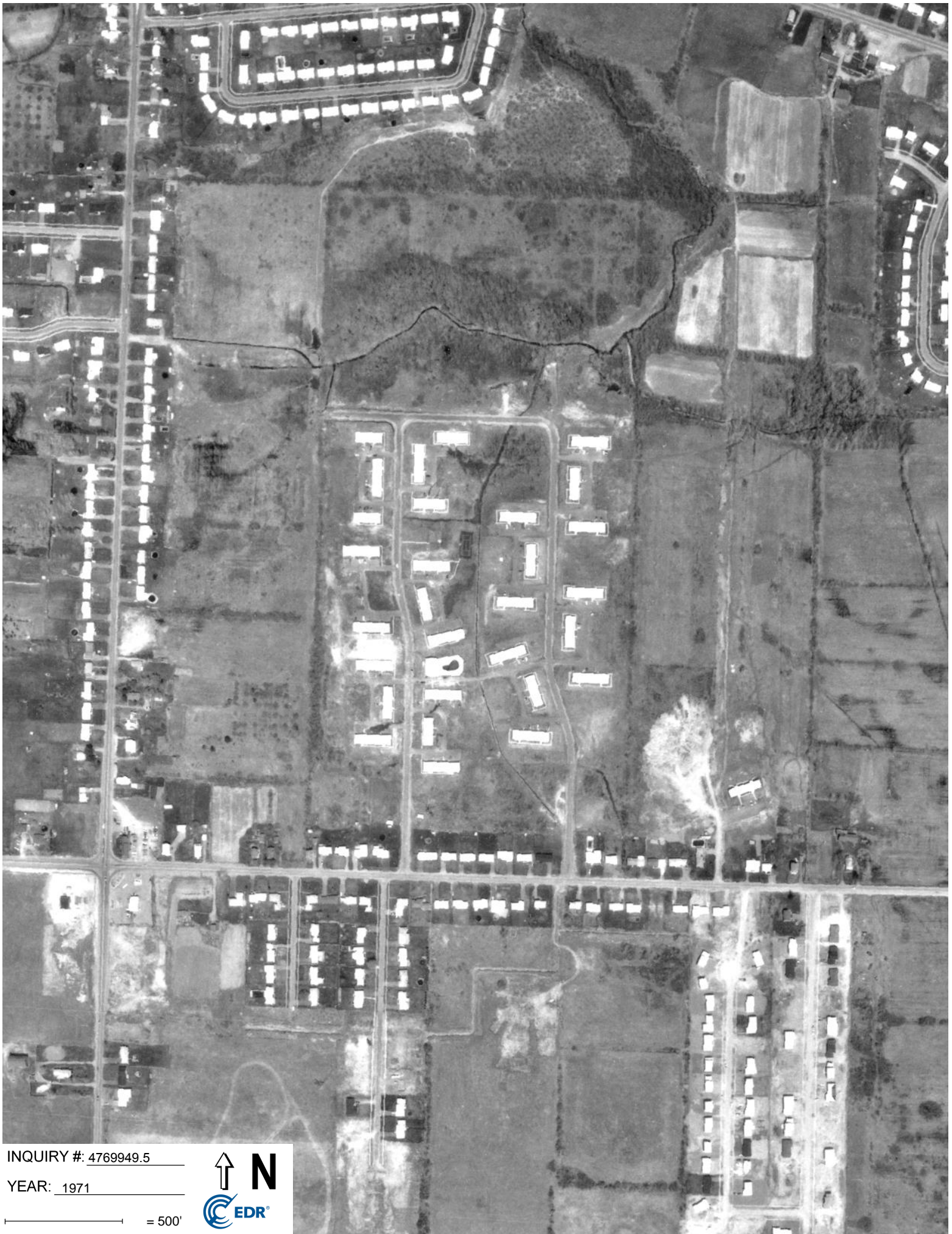


INQUIRY #: 4769949.5

YEAR: 1979

— = 500'



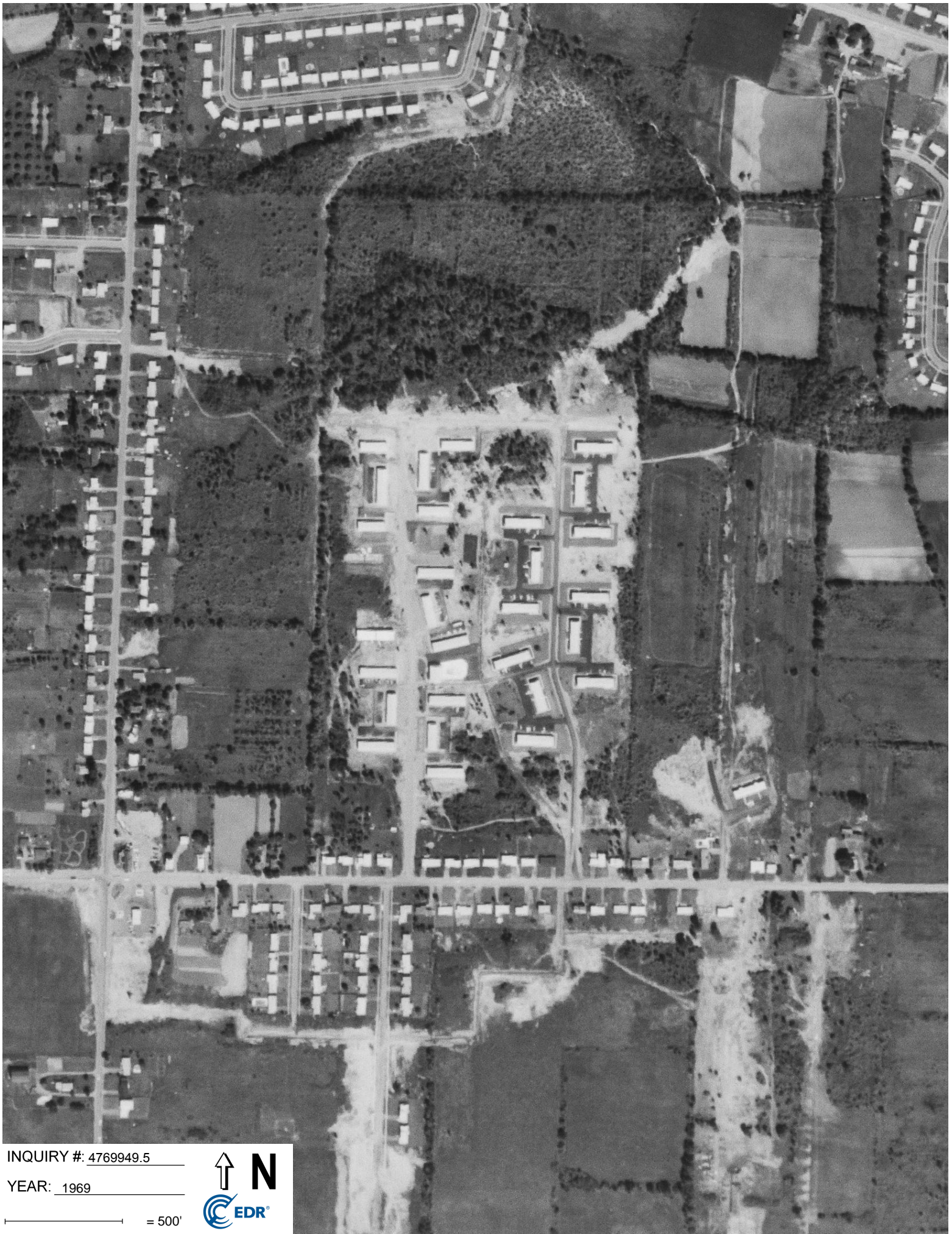


INQUIRY #: 4769949.5

YEAR: 1971

— = 500'





INQUIRY #: 4769949.5

YEAR: 1969

— = 500'





INQUIRY #: 4769949.5

YEAR: 1966

— = 500'





INQUIRY #: 4769949.5

YEAR: 1958

— = 500'

