

Oswego Building
132 Ellen Street
Oswego, NY 13126

Inquiry Number: 5109132.4

November 15, 2017

EDR Historical Topo Map Report

with QuadMatch™



6 Armstrong Road, 4th floor
Shelton, CT 06484
Toll Free: 800.352.0050
www.edrnet.com

EDR Historical Topo Map Report

11/15/17

Site Name:

Oswego Building
132 Ellen Street
Oswego, NY 13126
EDR Inquiry # 5109132.4

Client Name:

Partner Engineering and Science, Inc.
2154 Torrance Blvd, Suite 200
Torrance, CA 90501-0000
Contact: Irin Chacon



EDR Topographic Map Library has been searched by EDR and maps covering the target property location as provided by Partner Engineering and Science, Inc. were identified for the years listed below. EDR's Historical Topo Map Report is designed to assist professionals in evaluating potential liability on a target property resulting from past activities. EDR's Historical Topo Map Report includes a search of a collection of public and private color historical topographic maps, dating back to the late 1800s.

Search Results:**Coordinates:**

P.O.#	132 Ellen Street	Latitude:	43.44336 43° 26' 36" North
Project:	17-201994.1	Longitude:	-76.512491 -76° 30' 45" West
		UTM Zone:	Zone 18 North
		UTM X Meters:	377608.64
		UTM Y Meters:	4811162.06
		Elevation:	406.71' above sea level

Maps Provided:

1900
1943
1954
1956, 1960
1978
2013

Disclaimer - Copyright and Trademark Notice

This Report contains certain information obtained from a variety of public and other sources reasonably available to Environmental Data Resources, Inc. It cannot be concluded from this Report that coverage information for the target and surrounding properties does not exist from other sources. NO WARRANTY EXPRESSED OR IMPLIED, IS MADE WHATSOEVER IN CONNECTION WITH THIS REPORT. ENVIRONMENTAL DATA RESOURCES, INC. SPECIFICALLY DISCLAIMS THE MAKING OF ANY SUCH WARRANTIES, INCLUDING WITHOUT LIMITATION, MERCHANTABILITY OR FITNESS FOR A PARTICULAR USE OR PURPOSE. ALL RISK IS ASSUMED BY THE USER. IN NO EVENT SHALL ENVIRONMENTAL DATA RESOURCES, INC. BE LIABLE TO ANYONE, WHETHER ARISING OUT OF ERRORS OR OMISSIONS, NEGLIGENCE, ACCIDENT OR ANY OTHER CAUSE, FOR ANY LOSS OF DAMAGE, INCLUDING, WITHOUT LIMITATION, SPECIAL, INCIDENTAL, CONSEQUENTIAL, OR EXEMPLARY DAMAGES. ANY LIABILITY ON THE PART OF ENVIRONMENTAL DATA RESOURCES, INC. IS STRICTLY LIMITED TO A REFUND OF THE AMOUNT PAID FOR THIS REPORT. Purchaser accepts this Report "AS IS". Any analyses, estimates, ratings, environmental risk levels or risk codes provided in this Report are provided for illustrative purposes only, and are not intended to provide, nor should they be interpreted as providing any facts regarding, or prediction or forecast of, any environmental risk for any property. Only a Phase I Environmental Site Assessment performed by an environmental professional can provide information regarding the environmental risk for any property. Additionally, the information provided in this Report is not to be construed as legal advice.

Copyright 2017 by Environmental Data Resources, Inc. All rights reserved. Reproduction in any media or format, in whole or in part, of any report or map of Environmental Data Resources, Inc., or its affiliates, is prohibited without prior written permission.

EDR and its logos (including Sanborn and Sanborn Map) are trademarks of Environmental Data Resources, Inc. or its affiliates. All other trademarks used herein are the property of their respective owners.

Topo Sheet Key

This EDR Topo Map Report is based upon the following USGS topographic map sheets.

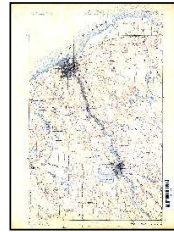
1900 Source Sheets



Fulton
1900
15-minute, 62500



Oswego
1900
15-minute, 62500



OSWEGO SPECIAL
1900
15-minute, 62500

1943 Source Sheets



OSWEGO EAST
1943
7.5-minute, 25000

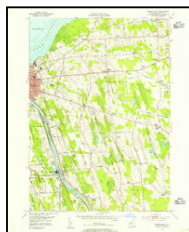


OSWEGO WEST
1943
7.5-minute, 25000

1954 Source Sheets



Oswego West
1954
7.5-minute, 24000
Aerial Photo Revised 1942



Oswego East
1954
7.5-minute, 24000
Aerial Photo Revised 1942

1956, 1960 Source Sheets



Fulton
1956
15-minute, 62500
Aerial Photo Revised 1942



Oswego
1960
15-minute, 62500
Aerial Photo Revised 1942

Topo Sheet Key

This EDR Topo Map Report is based upon the following USGS topographic map sheets.

1978 Source Sheets



Oswego West
1978
7.5-minute, 24000
Aerial Photo Revised 1976

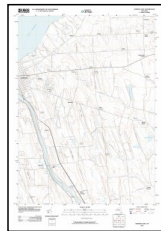


Oswego East
1978
7.5-minute, 24000
Aerial Photo Revised 1976

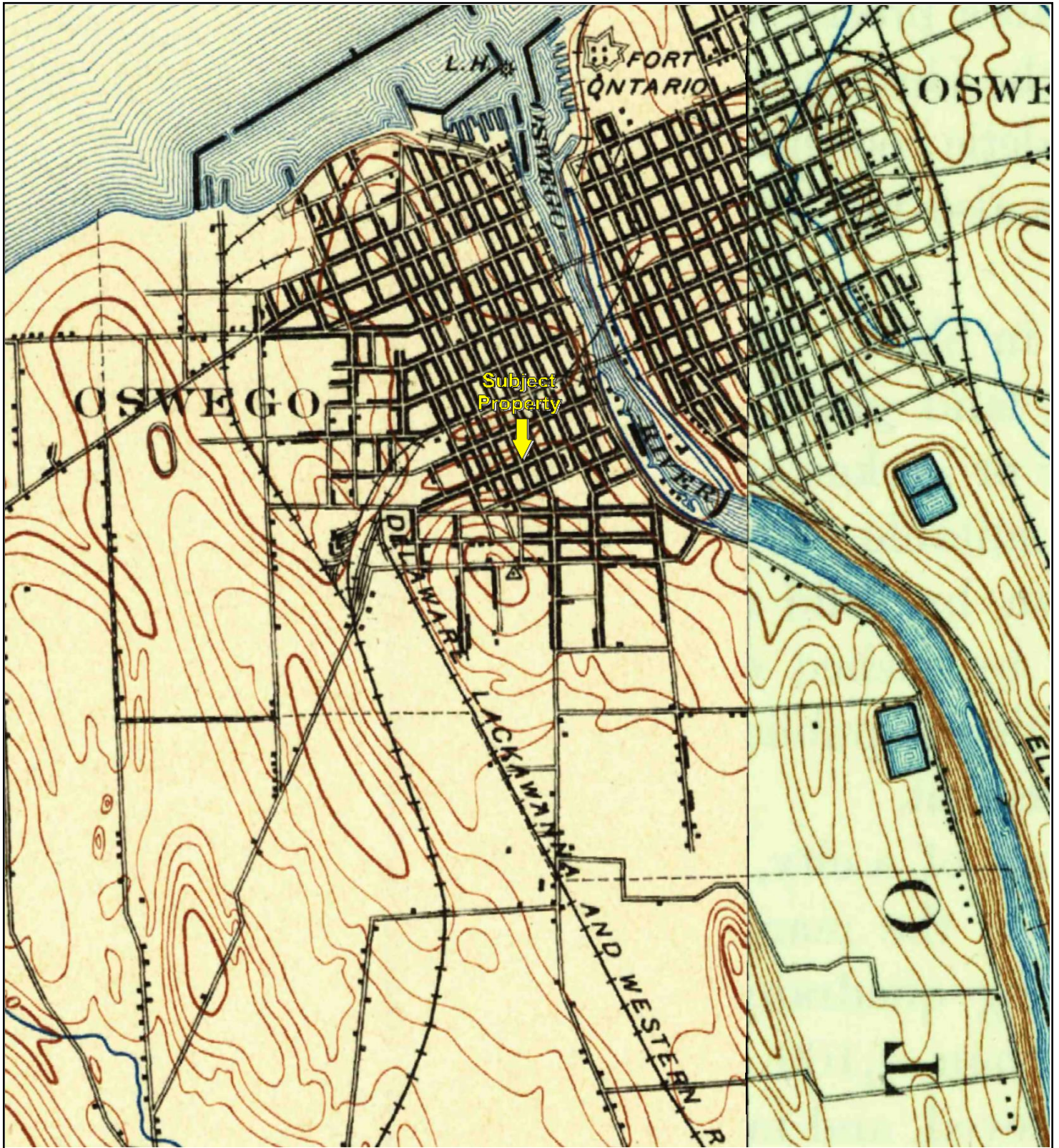
2013 Source Sheets



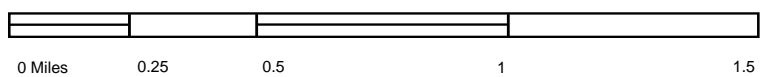
Oswego West
2013
7.5-minute, 24000



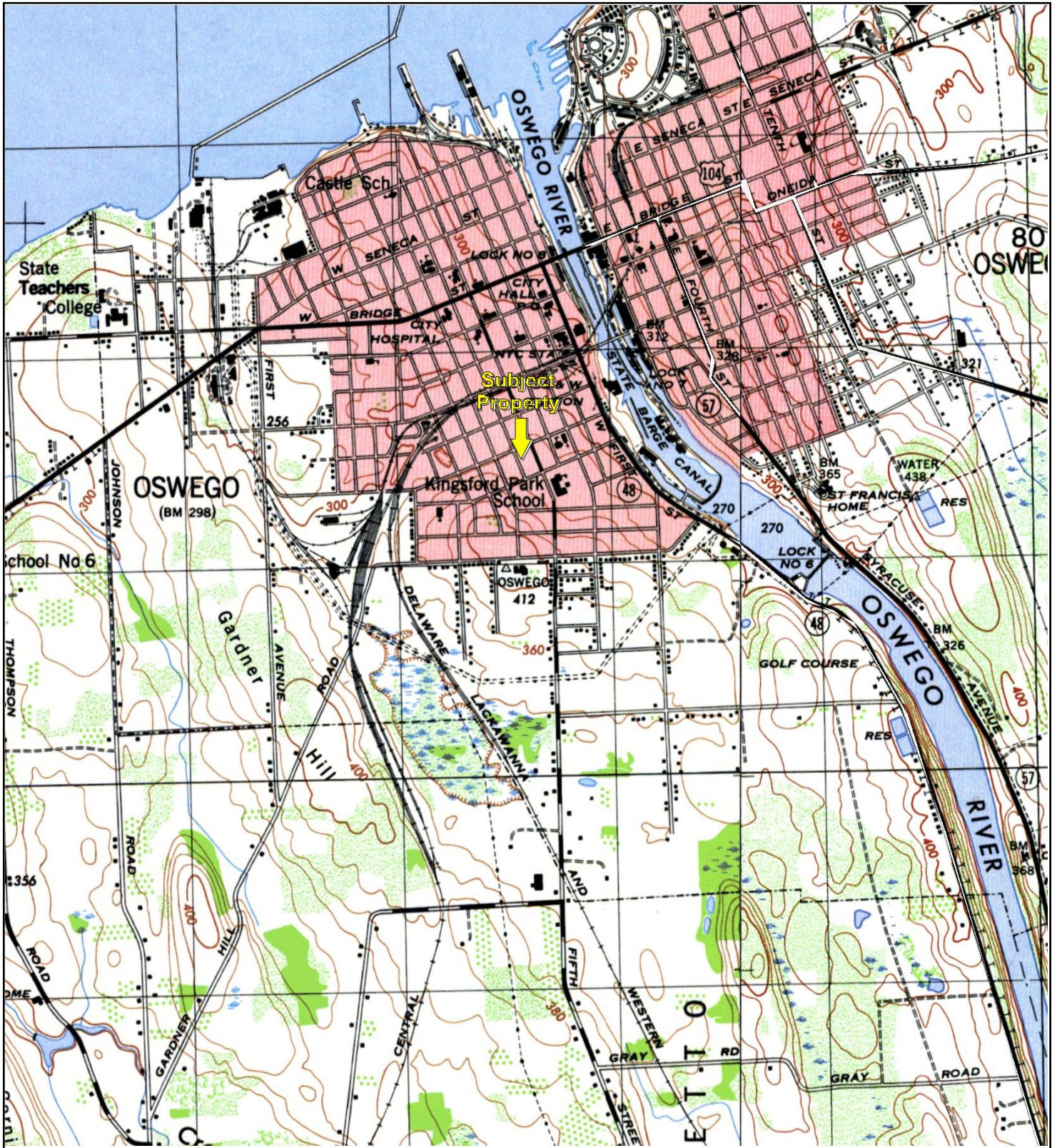
Oswego East
2013
7.5-minute, 24000



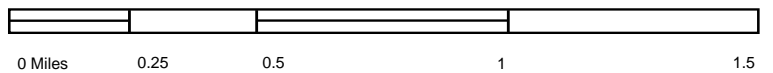
TP, Oswego, 1900, 15-minute
SE, Fulton, 1900, 15-minute
TP, OSWEGO SPECIAL, 1900, 15-minute



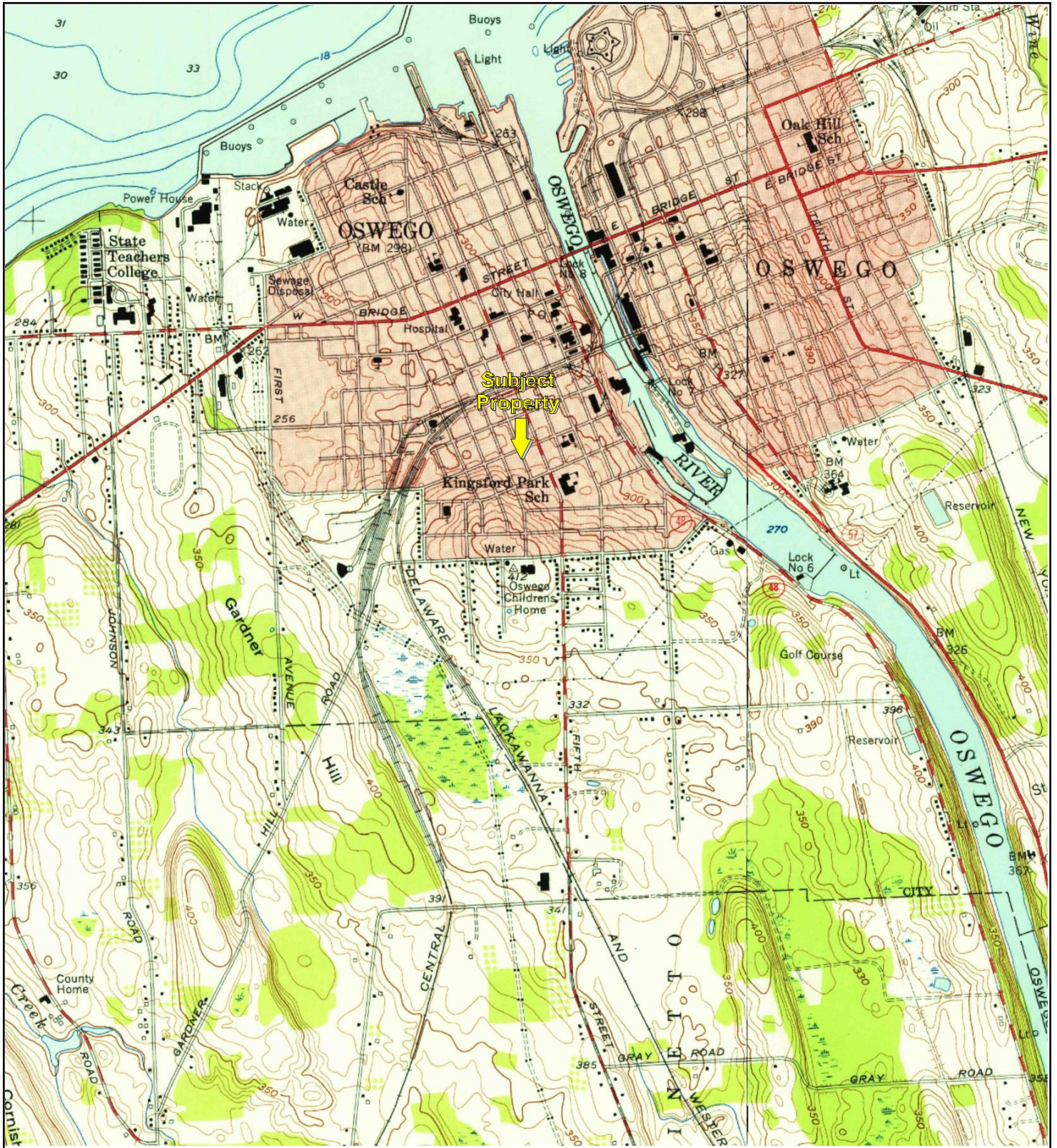
Key: Subject Property 



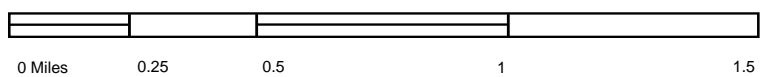
TP, OSWEGO WEST, 1943, 7.5-minute
E, OSWEGO EAST, 1943, 7.5-minute



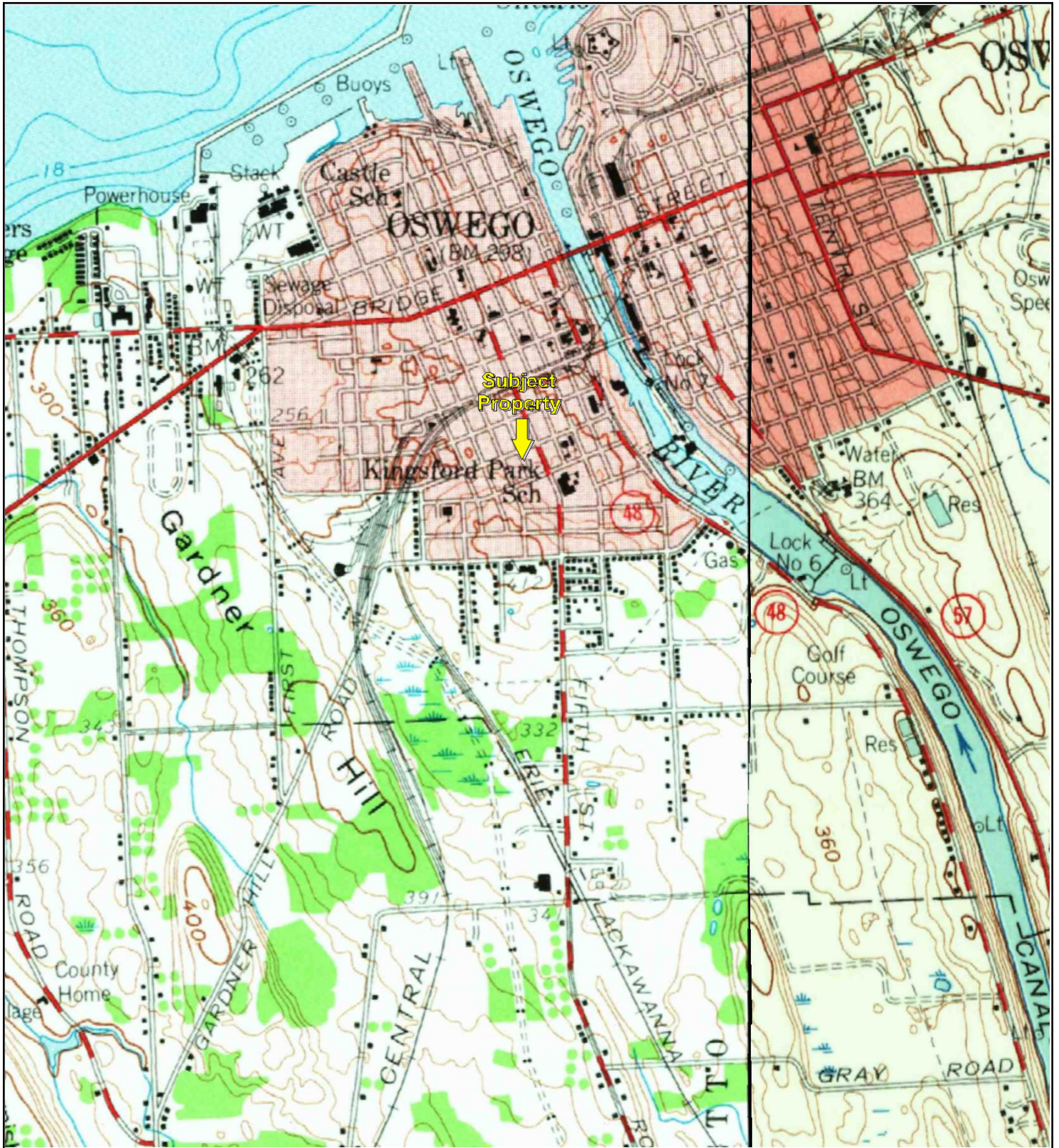
Key: Subject Property



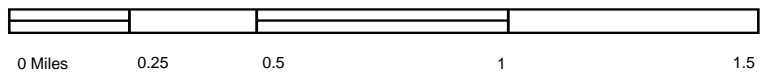
TP, Oswego West, 1954, 7.5-minute
E, Oswego East, 1954, 7.5-minute



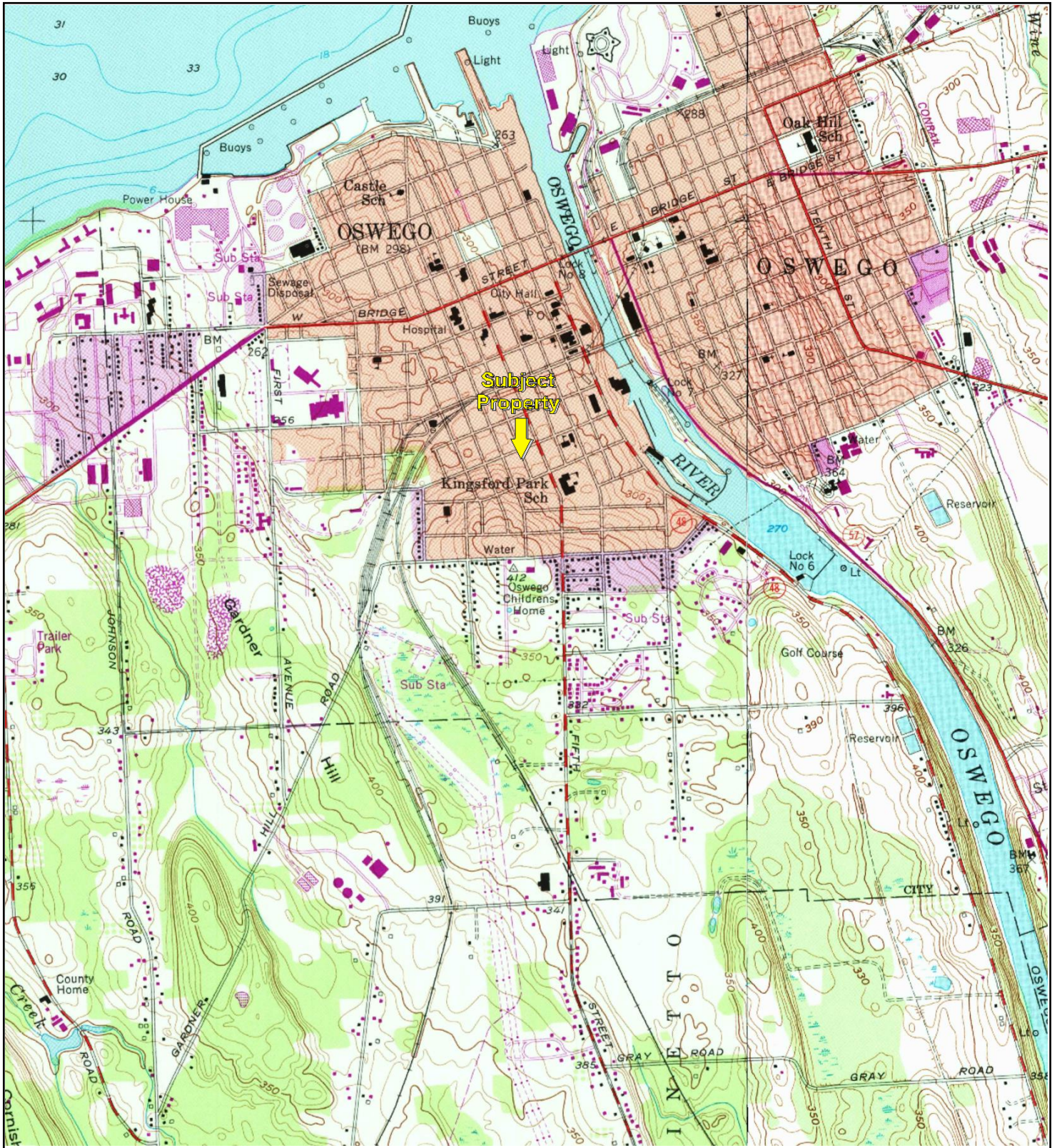
Key: Subject Property



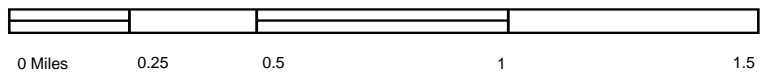
TP, Oswego, 1960, 15-minute
SE, Fulton, 1956, 15-minute



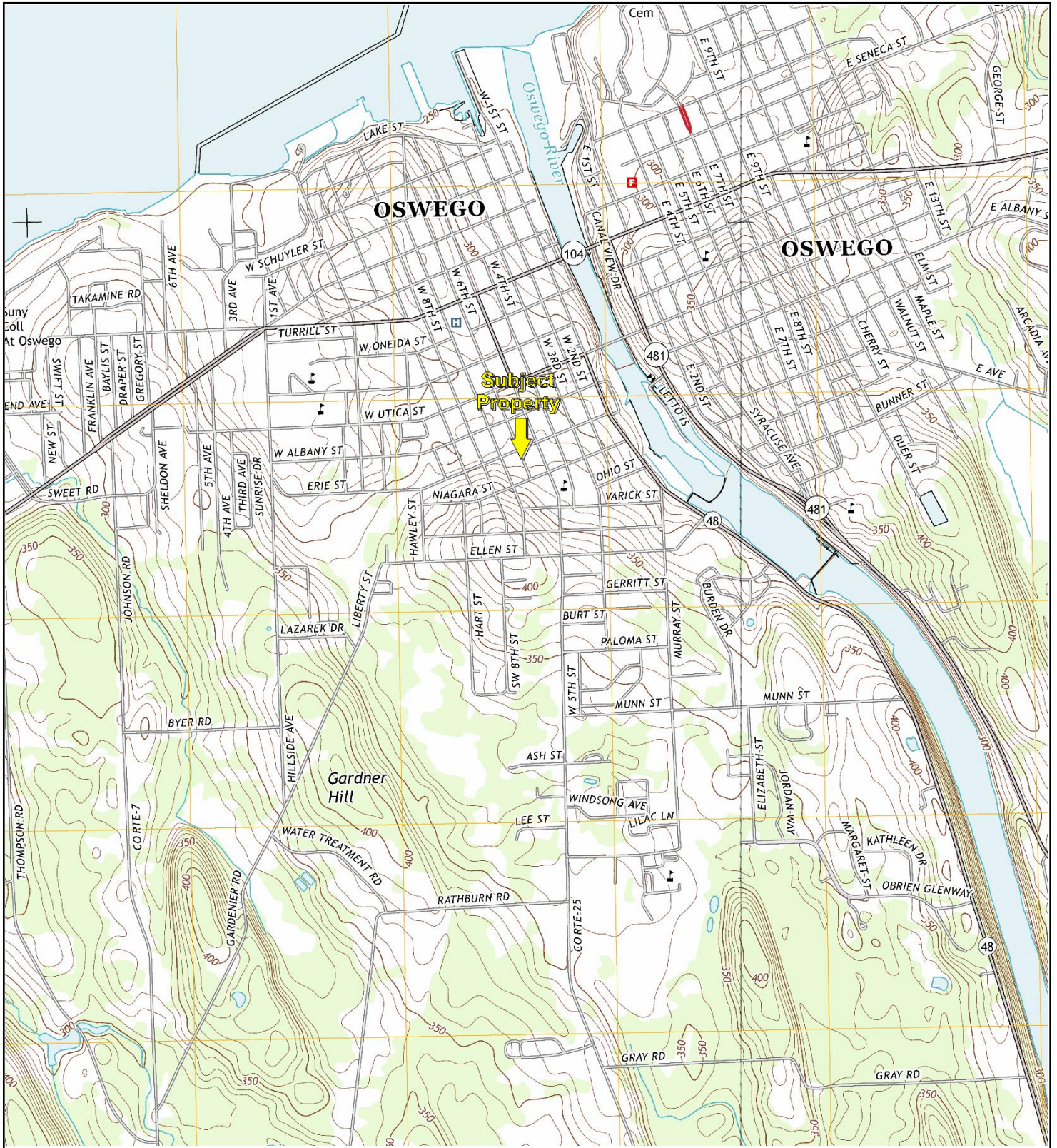
Key: Subject Property



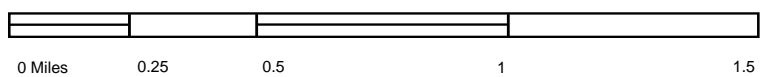
TP, Oswego West, 1978, 7.5-minute
E, Oswego East, 1978, 7.5-minute



Key: Subject Property



TP, Oswego West, 2013, 7.5-minute
E, Oswego East, 2013, 7.5-minute



Key: Subject Property